

Monolithic crystal filter

MQF10.7-0750/03



Application

- 6 pol filter
- i.f.- filter
- use in mobile and stationary transceivers

Limiting values

		Unit	Value
Center frequency	f_0	MHz	10.7
Insertion loss		dB	≤ 3.0
Pass band at 3.0 dB		kHz	± 3.75
Ripple in pass band	$f_0 \pm 3.00$ kHz	dB	≤ 2.0
Stop band attenuation	$f_0 \pm 8.75$ kHz	dB	≥ 45
	$f_0 \pm 12.5$ kHz	dB	> 65
Alternate attenuation	$f_0 \pm 12.5 \dots 300$ kHz	dB	> 65

Terminating impedance Z

R1 C1	Ohm/pF	1800 3.5
R2 C2	Ohm/pF	1800 3.5

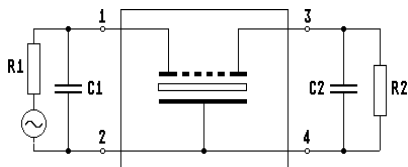
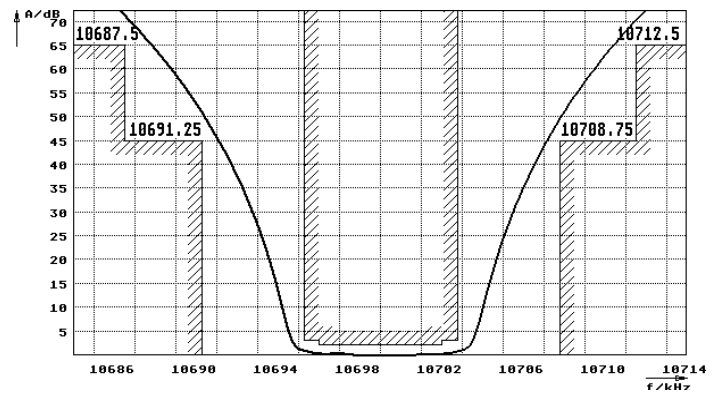
Operating temp. range	°C	-25... +70
-----------------------	----	------------

Characteristics MQF10.7-0750/03

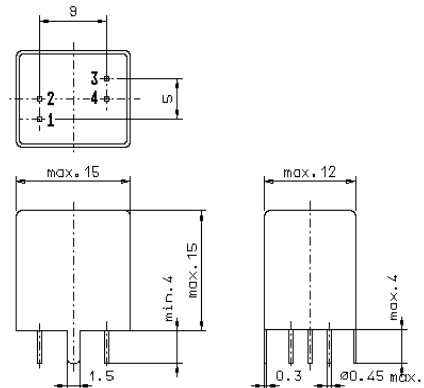
Pass band



Stop band



Pin connections: 1 Input
2 Input-E
3 Output
4 Output-E



GV4